

KLT-B8K-S5K3H7 V2.0**Samsung S5K3H7 MIPI Interface Auto-foco 8MP Módulo de Câmera**

Módulo de câmara No.	KLT-B8K-S5K3H7 V2.0
Sensor de imagem	S5K3H7
EFL	3.69 mm
F.NO	2.2
Pixel	3264 x 2448
Ângulo de visão	74.9°
Tipo de lente	1/3.2 polegada
Dimensões da lente	8.5 x 8.5 x 5.65 mm
Tamanho do Módulo	16.35 x 8.5 mm
Tipo de Módulo	Auto-foco
Interface	MIPI

Acasalamento Parte conector No. AXK7L30223G

Conector de acoplamento na placa principal. Vendido separadamente.

A photograph of three young children climbing a rope net on a playground. The child in the center is wearing a light blue polo shirt and has a wide, joyful expression with their mouth open. The child to the right is wearing a striped shirt and is also smiling. The background is a blurred wooden deck, suggesting motion. A large, semi-transparent watermark 'CameraModuleFactory.com' is overlaid diagonally across the image.

Top-class sensor for
premium mobile application!

Samsung S5K3H7

High speed and low power 8Mpixel sensor

8Mp 1/3.2" 1.4um BSI Pixel Image Sensor provides;

- Video features of 30fps at full 8Mp for zero shutter lag
- Low power camera solution with optimal design
- Outstanding BSI pixel providing clear and sharp still images in low light, YSNR10 82 Lux

SAMSUNG

Samsung S5K3H7

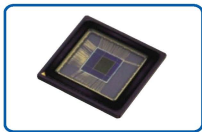
8Megapixel 1/3.2" 1.4um BSI CMOS Image Sensor

Key Features & Benefits



Target Applications

- Feature phones, Smart phones, Tablet and Digital Still Camera



Key Features

- Low power solution at full 8Mp
- Improved BSI pixel for clear and sharp still image
- On-chip Bad Pixel Correction (BPC)

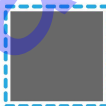
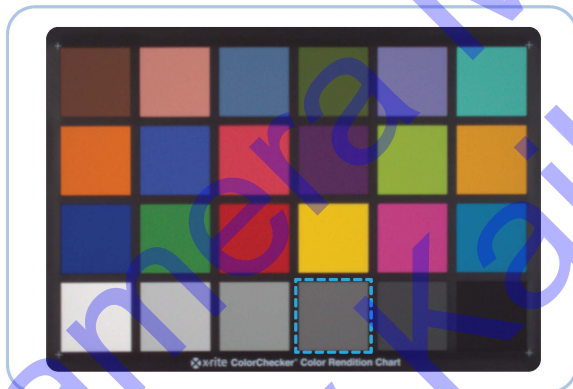


High Speed Frame Rate

- Full 8Mp 30fps enabling crisp still photos
- Video recording: full HD 30fps, HD 120fps, QVGA 240fps

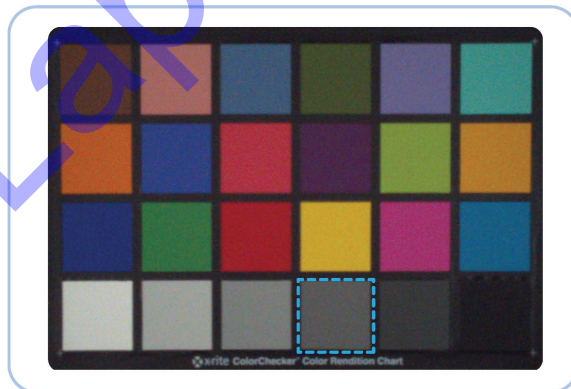
Product Images

700 Lux



Analog gain x1.6, 30fps
Shutter speed 55.5ms
SNR:38.7dB

50 Lux



Analog Gain x16, 30fps
Shutter Speed 33ms
SNR:25.69dB

Availability

S5K3H7 is sampling now with volume production for Q1, 2012.

Samsung Electronics Semiconductor Business

San#24 Nongseo-Dong, Kiheung-Gu, Youngin-City, Kyunggi-Do, Korea

For more information, please visit www.samsungsemi.com

The appearance of all products, dates, figures, diagrams and tables are subject to change at anytime without notice

SAMSUNG